



97 Central Street, Houghton Estate

www.perfectsure.co.za

Info@perfectsure.co.za

Since 1996

Company Summary

Boutique Short-Term Insurance Brokerage

Perfectsure is a small family-run business that first opened its doors in 1996 with the hopes of building it into a personalised hands-on brokerage.

With over 600 clients and 28 years of experience, our main focus is still a personal and professional service.

Our current staff compliment consists of myself Jo Kilian (the owner), Jodi Fourie (my daughter & co-shareholder) and two admin staff.

We work in association with the following short term insurance companies in South Africa: Building specialist (Santam), Echelon, CIB, CIA, Bryte, OMI, Momentum, ABSA, Hollard, HIC, Mirabilis and SHA.

Because of a profitable claims-ratio, and good business relationships, we can negotiate favourable premiums on behalf of our clients.

GROW OUR COMMUNITY SCHEME CLIENT PORTFOLIO

We are excited to announce that we have added property group companies from Eastern Gauteng to our commercial portfolio.

HONESTY, INTEGRITY AND COMPETENCE

We value the Financial Sector Conduct Authority's values and strive to treat our clients fairly.

INCLUSION OF LONG-TERM FINANCIAL PRODUCTS

We are looking at expanding our service offering to include long-term financial products.

Mission

Values

Vision

What Makes **Perfectsure** Different

Competitors

- 1) Claims turn-around time: 1 month
- 2) Client relations: Broker communicates solely with property portfolio managers
- 3) Quotations: Broker can negotiate the going rates

Perfectsure

- We will process claims within 1-2 weeks due to our strong insurer relationships
- We communicate directly with the unit owners to alleviate the pressure of the property managers
- We can negotiate premiums by leveraging our book

What Our Customers Are Saying

“

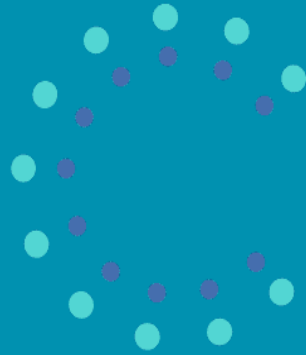
I have been with Perfectsure for at least 15 years and had a fair share of claims during the years. My interactions with their team have always been extremely professional! I will

”

recommend their services to my family & friends

Anton Dyssel, Engineer

Introductory Meeting Discussion Points



PERFECTSURE

- Referral agreement
- Property manager expectations
- Property portfolio
- Problematic loss ratios
- Current insurance cover
- Quotation process
- Attending AGMs
- Staff compliment
- Valuations process
- Insurance certificate process
- Claim dispute resolution mechanisms

Logo Gallery

